



TRAUMA-INFORMED
PRACTICES, LLC

SADIE ELISSEOU, MD

- TRAUMA-INFORMED EXPERT
- CORPORATE CONSULTANT
- PRIMARY CARE PHYSICIAN

Dr. Elisseou is a leading subject matter expert in trauma-informed care. She consults for companies and organizations that wish to cultivate wellness and help team members optimally engage through stressful times. She also teaches healthcare professionals how to provide top-quality care to patients who have lived through trauma.

SPEAKING TOPICS:

- ✓ Trauma-Informed Leadership
- ✓ Impact of Workforce Reductions
- ✓ Stress, Burnout, and Resilience
- ✓ Managing 'Difficult' Employees
- ✓ Workload Management
- ✓ Sensitive Communication

\$322 billion

OF LOST
PRODUCTIVITY
GLOBALLY DUE TO
BURNOUT

15-20%

OF TOTAL PAYROLL
IN TURNOVER
COSTS DUE TO
BURNOUT

Source:Gallup

 **200**
speaking
engagements

 **20**
organizational
partnerships

 **40**
health systems
collaborations

WHAT IS TRAUMA?

The Substance Abuse and Mental Health Services Administration (SAMHSA) defines trauma as an **event(s)** or set of circumstances that is **experienced** as physically or emotionally harmful or life threatening and that has lasting adverse **effects** on functioning and well-being.

WHAT IS TRAUMA-INFORMED CARE (TIC)?

TIC is a framework for supporting survivors of various forms of trauma. TIC principles can be applied universally in healthcare to promote safety, foster healing, and build resilience. There are 4 Rs of a trauma-informed approach:



Realize the widespread impact of trauma



Recognize the signs of trauma



Respond by putting knowledge into practice



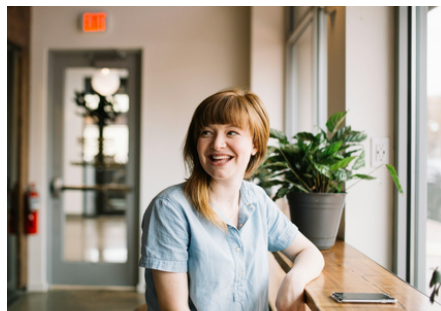
Actively resist re-traumatization

THREE TRAUMA-INFORMED CORPORATE TRAININGS

Workload Management



Employee Well-Being



Leadership



COLLABORATIONS



Procter&Gamble



HARVARD
MEDICAL SCHOOL



Society of Hospital Medicine



Corewell
Health™



U.S. Department
of Veterans Affairs



PLANETREE
INTERNATIONAL



LINKSQUARES



DR. LORNA BREEN
HEROES' FOUNDATION



AAMC Association of
American Medical Colleges

TESTIMONIALS

**"All organizations should
have this training."**

-P&G Global HR Leader

**"I've attended many talks,
but few have reached the
transformative level achieved
today."**

*-Harvard Medical School Senior
Leader*

**"I can't tell you how this will
make a difference in my life
and career."**

-Michigan EMS Leader



TRAUMA-INFORMED
PRACTICES, LLC



SCAN TO
LEARN MORE



www.sadie-elisseou.com



hello@sadie-elisseou.com